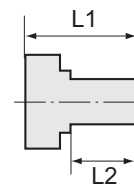


Reduziernippel

Messing

PLUS



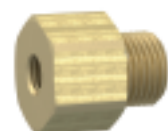
MS251L1418

Reduziernippel, lange Ausführung, zylindrisch

Artikel Nr.	Typen Nr.	Außengewinde	Innengewinde	L1 mm	L2 mm	SW mm
134680	MS251L1818	G 1/8	G 1/8	19,0	7,0	14
134681	MS251L1814	G 1/8	G 1/4	23,0	7,0	17
134682	MS251L1418	G 1/4	G 1/8	22,0	9,0	17
134683	MS251L1414	G 1/4	G 1/4	24,0	9,0	17
134684	MS251L1438	G 1/4	G 3/8	27,0	9,0	19
134685	MS251L3814	G 3/8	G 1/4	23,0	9,0	19
134686	MS251L3838	G 3/8	G 3/8	24,0	9,0	19
134687	MS251L3812	G 3/8	G 1/2	29,0	9,0	24
134688	MS251L1238	G 1/2	G 3/8	26,0	11,0	24
134689	MS251L1212	G 1/2	G 1/2	29,0	11,0	24
134690	MS251L1234	G 1/2	G 3/4	32,0	11,0	32
134691	MS251L3412	G 3/4	G 1/2	29,0	12,0	32
134692	MS251L3434	G 3/4	G 3/4	34,0	12,0	32
134693	MS251L341	G 3/4	G 1	34,0	12,0	36
134694	MS251L134	G 1	G 3/4	35,0	13,0	38
134695	MS251L11	G 1	G 1	33,0	13,0	38
134696	MS251L1114	G 1	G 1 1/4	37,0	13,0	50
134697	MS251L1141	G 1 1/4	G 1	36,0	14,0	50
134698	MS251L114114	G 1 1/4	G 1 1/4	36,0	14,0	50
134699	MS251L114112	G 1 1/4	G 1 1/2	38,0	14,0	55
134700	MS251L112114	G 1 1/2	G 1 1/4	35,0	15,0	55
134701	MS251L112112	G 1 1/2	G 1 1/2	37,0	15,0	55
134702	MS251L1122	G 1 1/2	G 2	46,0	15,0	70
134703	MS251L2114	G 2	G 1 1/4	48,0	20,0	70
134704	MS251L2112	G 2	G 1 1/2	48,0	20,0	70

Reduziernippel, lange Ausführung

Artikel Nr.	Typen Nr.	Außengewinde	Innengewinde	L1 mm	L2 mm	SW mm
134705	MS251LM35	M3	M5	11,0	3,0	7
134706	MS251LM53	M5	M3	13,0	5,0	7
134707	MS251LM55	M5	M5	13,0	5,0	7
134708	MS251LM518	M5	G 1/8	19,0	5,0	14
134709	MS251L18M5	G 1/8	M5	17,0	7,0	14

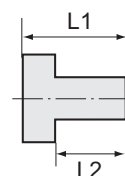


MS251L18M5

Verschlusschrauben

Messing

PLUS



MS290MS14

Verschlusschraube mit Innensechskant und Bund

Artikel Nr.	Typen Nr.	Gewinde	L1 mm	L2 mm	SW mm
135962	MS290MS18	G 1/8 Innensechskant	10,0	7,0	5
135963	MS290MS14	G 1/4 Innensechskant	12,0	9,0	6
135965	MS290MS38	G 3/8 Innensechskant	12,0	9,0	8
135966	MS290MS12	G 1/2 Innensechskant	15,0	11,0	10
135967	MS290MS34	G 3/4 Innensechskant	16,0	12,0	12
135968	MS290MS1	G 1 Innensechskant	18,0	13,0	17
135969	MS290MS114	G 1 1/4 Innensechskant	19,0	14,0	22
135970	MS290MS112	G 1 1/2 Innensechskant	20,0	15,0	24
135971	MS290MS2	G 2 Innensechskant	25,0	20,0	27

**NICHT DAS PASSENDE
GEFUNDEN?**

Alle Produktvarianten, Dokumentation und weitere Informationen erhalten Sie auf Anfrage.